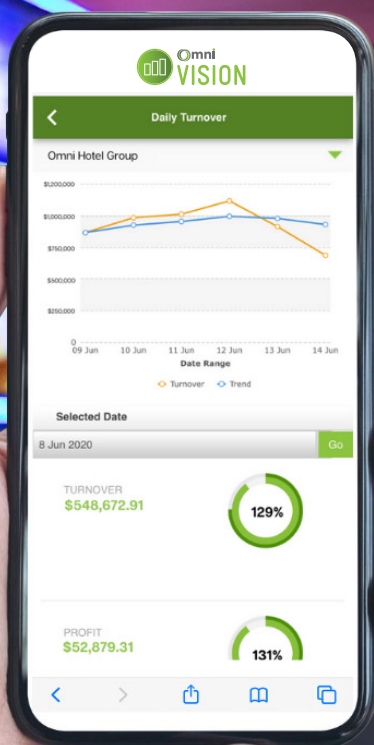


# SEE EVERYTHING WITH OMNIVISION



### Streamlined reporting

A comprehensive range of built-in reports for devices and gaming analysis including cash levels and performance.



### User-friendly

Accessible from your office or on the go.



### Multi-level access

Can be configured to allow groups to see individual venues' devices.



### Accurate

Always up-to-date, with near-real-time reporting.



### Secure

Omni VISION is highly secure, ensuring your data remains protected.

Omni VISION is a secure, cloud-based portal that gives you a single view of your EGMs and Banktech devices.



## Features and Specifications

### + Dashboard:

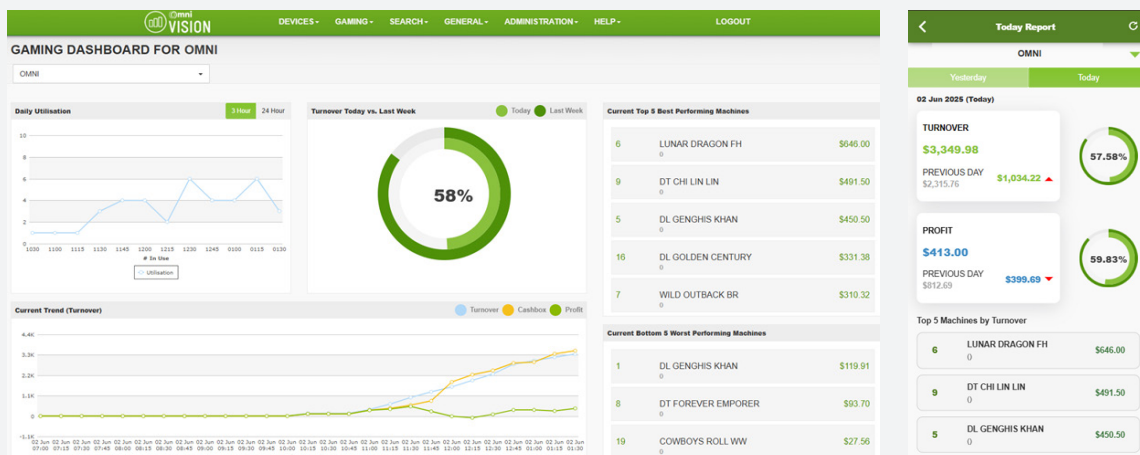
- Multi-level access allows groups to see data across all venues or just one.
- Graphically displays cash levels across all devices.

### + Device manager:

- View the status of all Banktech/UTOPIA devices to maximise up-time and fault-finding analysis.
- View complete transaction history across all Banktech/UTOPIA devices.

### + Security:

- Peace of mind knowing your data is secure behind our PCI-compliant firewalls and infrastructure.
- External penetration tests conducted multiple times a year to ensure Omni VISION is operating at the forefront of cyber-security technology.



Get set up today.  
Call Liza on 1800 200 201  
or [sales@utopiagaming.com.au](mailto:sales@utopiagaming.com.au)  
[utopiagaming.com.au](http://utopiagaming.com.au)